

PART OF SECTIONS 11, 12, 13, & 14, T. 6 N., R. 3 E., S. L. B. & M.
CAUSEY ESTATES SUBDIVISION NO. 3

96

TAXING UNIT: 58

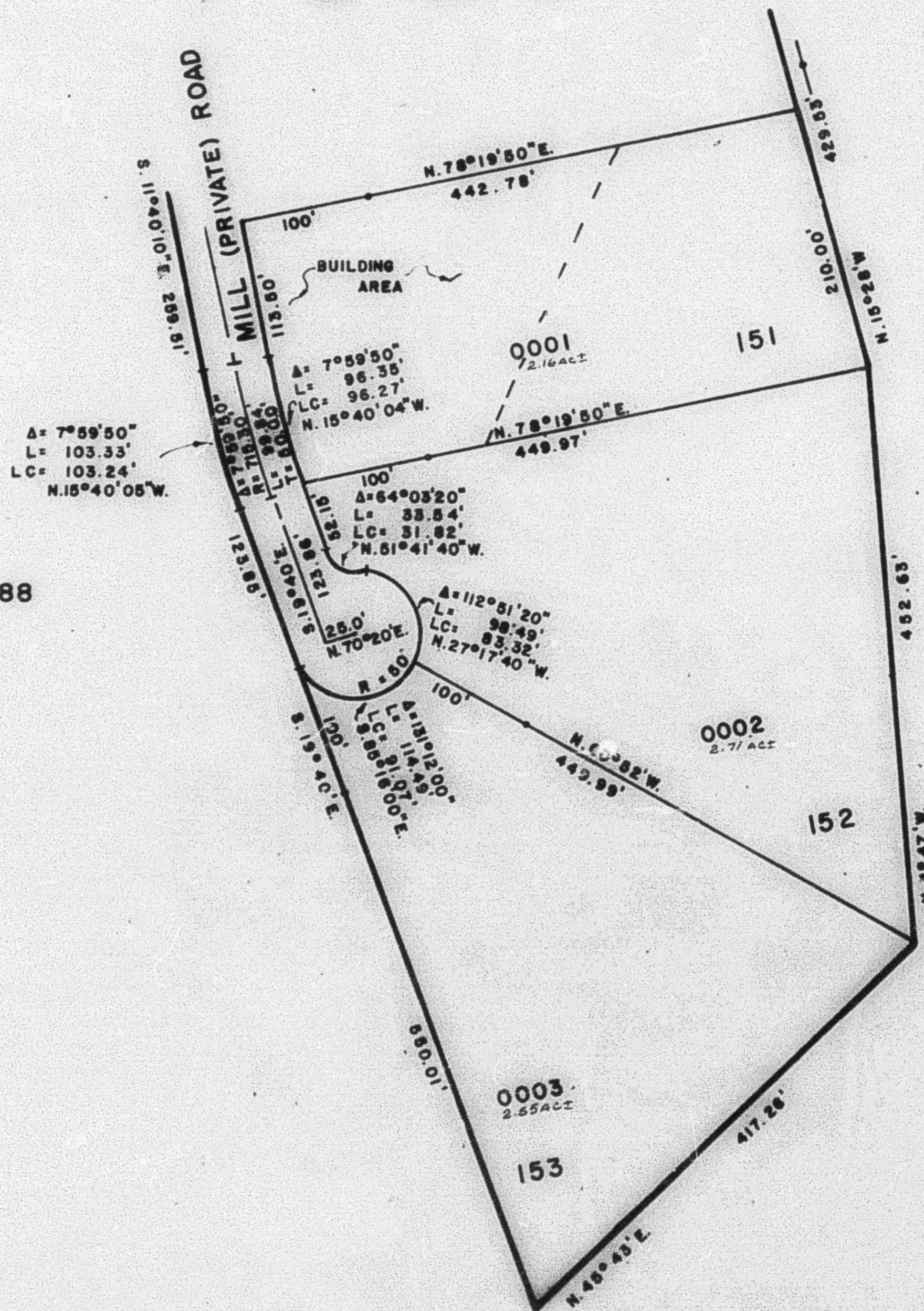
LOTS 151-153
 IN WEBER COUNTY

PREFIX: 23-096

SCALE 1" = 100'

EXCEPT WHERE OTHERWISE SHOWN
 ALL LOTS OWNED BY:
 BASIN LAND DEVELOPMENT CO.

SEE PAGE 95



SEE PAGE 88

SEE PAGE 88

FOR COMPLETE ENG. DATA
 SEE ORIG. DED. PLAT IN
 BOOK 24, PAGES 38, 39, 40.

SEE PAGE 88